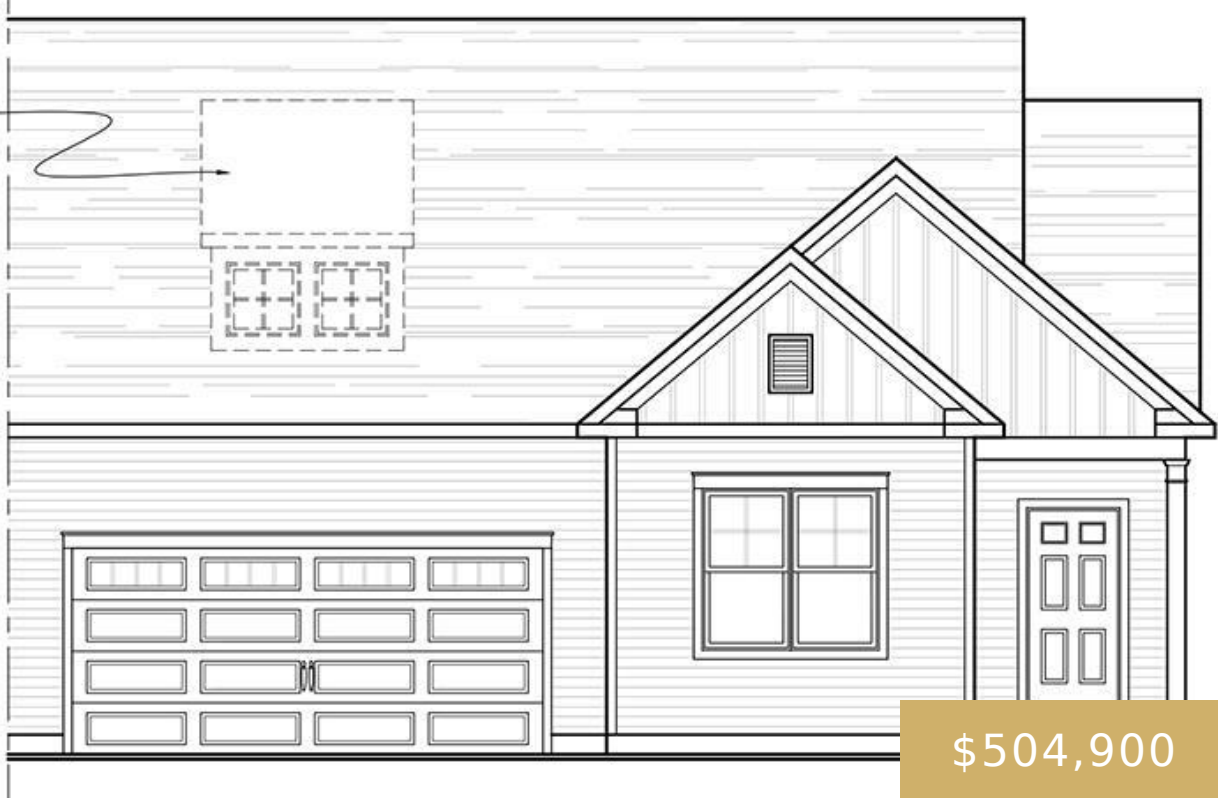


OPTIONAL
DORMER



\$504,900

L012 WIGGINS DRIVE, MALTA, NY 12020

<https://fallatigroup.com>

Introducing Thompson Farms! Located in the heart of Malta, this neighborhood features one- and two-story first floor master suite twin townhouses. All homes will be built with the highest energy standards and includes desirable features for today's homeowners. Enjoy the convenience this neighborhood offers only minutes to every major activity, shopping, schools and recreation. Homes are to be built, photos are examples of builder's existing homes.

- 3 beds
- Townhouse
- Residential
- Active

Basics



Date added: Added 2 months ago

List Office Name: Signature One Realty Grp, LLC

List Agent Office Phone: 518-376-2965

Living Area sqft: 1560

Lot Size Acres: 0.2 acres

Type: Townhouse

Status: Active

Bedrooms: 3 beds

MLS ID: 202512921

List Agent Email: cmquade32@gmail.com

County: Saratoga

Subdivision Name: Thompson Farms

Category: Residential

New Construction: 1

Total Rooms: 9

Half baths: 0 half baths

Directions

Directions: I-87 Exit 12 East on 67 to North on Route 9, 1.7 miles to left on East High to Thompson Farms on the right

Building Details

Construction Materials: Vinyl Siding

Garage Spaces: 2

Roof: Asphalt

Architectural Style: Ranch

Patio & Porch: Deck

Basement: Full

Windows: Screens, Bay Window(s), Double Pane Windows, ENERGY STAR Qualified Windows, Garden Window(s)

Doors: Sliding Doors

Interior Features



Floor Covering: Carpet, Laminate, Linoleum, Vinyl	Heating: Forced Air, Natural Gas
Cooling: Central Air	Appliances: Dishwasher, ENERGY STAR Qualified Appliances, Gas Water Heater, Microwave, Range, Refrigerator
Fireplace: 1	Fireplace Features: Gas
Interior Features: Solid Surface Counters, Walk-In Closet(s), Kitchen Island	Above Grade Finished Area Source: Plans
Laundry Features: Electric Dryer Hookup, Washer Hookup	Bathrooms Full: 2
Bathrooms Total: 2	

Exterior Features

Parking: Driveway, Garage Door Opener, Paved	Exterior Features: Lighting
Lot Size Units: Acres	Lot Size Area: 0.2
Lot Features: Sprinklers In Front, Landscaped	

Amenities & Features

Utilities: Underground Utilities	Sewer: Public Sewer
Water: Public	Electric: 200+ Amp Service
HOA Amenities: None	Other Equipment: Irrigation Equipment

Fees

HOA Fee: \$175	HOA Fee Frequency: Monthly
HOA Fee Includes: Other, Maintenance Grounds, Snow Removal	

Financial



Possession: At Closing **Special Listing Conditions:** Required Reg Policy
Tax Annual Amount: \$1

School Information

High School: Ballston Spa **High School District:** Ballston Spa

